



# MONTANA COAL BOARD

---

COAL IMPACTED LOCAL GOVERNMENTAL UNITS  
DESIGNATION REPORT  
AS REQUIRED BY MCA 90-6-207

2025 BIENNIUM  
(JULY 1, 2023 – JUNE 30, 2025)

MAY 2023

We make every effort to ensure that our documents are fully accessible to persons with disabilities. Alternative, accessible formats of this document will be provided upon request.

For an alternate format please contact:

Montana Department of Commerce  
(406) 841-2770

Becky Anseth, Interim Division Administrator  
Community MT Division  
Montana Department of Commerce  
301 S. Park Ave  
Helena, MT 59620

Analysis & Report Prepared by:  
Benjamin Gill, Economist

Research & Information Services Bureau  
Office of Tourism & Business Development  
Montana Department of Commerce

## TABLE OF CONTENTS

|   |                                     |
|---|-------------------------------------|
| INTRODUCTION.....   | 4                                   |
| DESIGNATION OF LOCAL GOVERNMENTAL UNITS .....   | 4                                   |
| POPULATION INCREASE OR DECREASE <i>MCA 90-6-207(1)(a)</i> .....   | 4                                   |
| NEW COAL DEVELOPMENT <i>MCA 90-6-207(1)(b)(i)</i> .....   | 4                                   |
| INCREASED OR DECREASED COAL PRODUCTION <i>MCA 90-6-207(1)(b)(ii)</i> .....                              | 4                                   |
| NEW RAILROAD SERVICE <i>MCA 90-6-207(1)(b)(iii)</i> .....   | 5                                   |
| AIR QUALITY PERMIT FOR A NEW COAL-BURNING FACILITY <i>MCA 90-6-207(1)(b)(iv)</i> .....                  | 5                                   |
| PROXIMITY TO A QUALIFYING COAL MINE OR COAL-BURNING FACILITY <i>MCA 90-6-207(1)(c)</i> .....            | 5                                   |
| CESSATION OR SCHEDULED CESSATION OF MINING <i>MCA 90-6-207(1)(d)(i)</i> .....                           | 5                                   |
| CLOSURE OR SCHEDULED CLOSURE OF A COAL-BURNING FACILITY <i>MCA 90-6-207(1)(d)(ii)</i> .....             | 5                                   |
| ADDITIONAL FACTORS <i>MCA 90-6-207(2)(a) and (b)</i> .....  | 6                                   |
| LENGTH OF DESIGNATION <i>MCA 90-6-207(7)</i> .....  | 6                                   |
| ANALYSIS METHODOLOGY .....  | 6                                   |
| POPULATION CHANGE ANALYSIS .....  | 6                                   |
| COAL PRODUCTION ANALYSIS .....  | 7                                   |
| GEOSPATIAL ANALYSIS .....   | 7                                   |
| RESULTS.....  | 7                                   |
| DESIGNATION DUE TO INCREASED COAL PRODUCTION <i>MCA 90-6-207(1)(b)(ii)</i> .....                        | 7                                   |
| DESIGNATION DUE TO CESSATION OF COAL PRODUCTION <i>MCA 90-6-207(1)(d)(i)</i> .....                      | 8                                   |
| DESIGNATION DUE TO THE SCHEDULED CLOSURE OF A COAL-BURNING FACILITY <i>MCA 90-6-207(1)(d)(ii)</i> ..... | <b>ERROR!</b>                       |
| <b>BOOKMARK NOT DEFINED.</b>  |                                     |
| DESIGNATION DUE TO DECREASED COAL PRODUCTION <i>MCA 90-6-207(1)(b)(ii)</i> ....                         | <b>ERROR! BOOKMARK NOT DEFINED.</b> |
| CONCLUSIONS .....   | 8                                   |
| STATE AGENCIES CONTACTED & SOURCES USED.....  | 8                                   |
| STATE AGENCIES & ENTITIES CONTACTED FOR INFORMATION.....  | 8                                   |
| DATA SOURCES USED IN THE ANALYSIS FOR THIS REPORT .....   | 9                                   |
| APPENDIX A. HISTORIC COAL PRODUCTION BY MINE .....  | 10                                  |
| APPENDIX B. LIST OF DESIGNATED LOCAL GOVERNMENTAL UNITS.....  | 18                                  |

## **INTRODUCTION**

---

The Montana Department of Commerce (referred to as “Commerce”, hereafter) is required by statute (MCA 90-6-207) to biennially designate each county, incorporated city and town, school district or other governmental unit impacted by coal development. The specific criteria for designation are defined in detail within the statute and summarized below. This designation guides the use of funds and directs the Montana Coal Board (referred to as “Coal Board”, hereafter) to award at least 50% of appropriated funds to designated local government units, except as it pertains to 90-6-205(4)(b). This report is provided to the Coal Board for the purpose of awarding grants from available funds during the biennium.

In preparation of this report, Commerce collected relevant information from the Montana Department of Environmental Quality (DEQ), the Montana Department of Revenue (DOR), the Montana Department of Transportation (MDT), the Montana Local Government Services Bureau, the Montana Census and Economic Information Bureau (CEIC), and the Montana Department of Labor & Industry (DLI). These entities provided information, data and other assistance allowing Commerce to accurately review statutory priorities and finalize the biennial designations.

A complete list of local governmental units designated by Commerce can be found in Appendix B at the end of this report. The list also identifies which section of the statute was used to qualify the governmental unit as a designated entity by coal mine or coal-burning facility that had an event triggering eligibility. While the list only shows the designated entities, Commerce’s analysis included all local governmental units to determine if the entity met the statutory criteria for designation (more detail located in the “Analysis Methodology” later in this report).

## **DESIGNATION OF LOCAL GOVERNMENTAL UNITS**

---

To qualify under the statute, local governmental unit designation is established by reviewing the governmental units that meet the statutory guidelines explained in more detail below. It is noteworthy to mention that governmental units may have met the designation under one or more subsection; the specifics on how a local governmental unit was designated is included in the complete list of designees at the end of this report (Appendix B).

### **POPULATION INCREASE OR DECREASE**

*MCA 90-6-207(1)(a)*

Each county, incorporated city or town, school district, and other governmental unit shall be designated that has had or expects to have – as a result of coal development – a net increase or decrease in the estimated population of at least 10% over one of the 3-year periods defined in the statute. A detailed explanation of the specific 3-year time periods can be found in the “Analysis Methodology” section of this report.

### **NEW COAL DEVELOPMENT**

*MCA 90-6-207(1)(b)(i)*

Each county and all local governmental units within each county in which a mining permit has been granted by DEQ establishing a new coal mine to produce at least 300,000 tons a year and that Commerce determines will commence production within two years shall be designated.

### **INCREASED OR DECREASED COAL PRODUCTION**

*MCA 90-6-207(1)(b)(ii)*

Each county and all local governmental units within each county in which Commerce has determined the production of an existing coal mine will increase or decrease by at least 1 million tons per year and that the new, expanded, or reduced production will commence within 2 years of the designation shall be designated.

---

**NEW RAILROAD SERVICE**

*MCA 90-6-207(1)(b)(iii)*

Each county and all local governmental units within each county in which a newly constructed railroad serves a new, existing, or expanding coal mine shall be designated.

---

**AIR QUALITY PERMIT FOR A NEW COAL-BURNING FACILITY**

*MCA 90-6-207(1)(b)(iv)*

Each county and all local governmental units within each county in which DEQ has issued an air quality permit for a new steam-generating or other new coal-burning facility that would consume at least 1 million tons of Montana-mined coal a year and Commerce has determined construction or operation of the new facility will commence within 2 years shall be designated.

---

**PROXIMITY TO A QUALIFYING COAL MINE OR COAL-BURNING FACILITY**

*MCA 90-6-207(1)(c)*

Each local government unit located within 100 miles, measured over the shortest all-weather public road, of a mine or facility qualifying under subsection (1)(b)(i), (1)(b)(ii), or (1)(b)(iv) explained above shall be designated.

Due to the expected increase in coal production at the Signal Peak Mine and Spring Creek Mine, these two mines were used to designate local governmental units per this subsection. Additionally, due to the decrease in production at the Rosebud Mine, this mine was used to designate local governmental units per this subsection.

---

**CESSATION OR SCHEDULED CESSATION OF MINING**

*MCA 90-6-207(1)(d)(i)*

Each local government in which a mine that has produced 300,000 tons or more of coal a year has ceased all significant mining or is scheduled to cease within 1 year shall be designated.

The West Decker Mine located in Big Horn County did not produce any coal from calendar years 2019 through 2021. From 2000 through 2008, this mine produced an average of 7.5 million tons of coal per year. Therefore, West Decker Mine is considered to meet the qualifications of this subsection in “ceasing all significant mining”.

---

**CLOSURE OR SCHEDULED CLOSURE OF A COAL-BURNING FACILITY**

*MCA 90-6-207(1)(d)(ii)*

Each local government in which a steam-generating or other coal-burning facility that has operated under an air quality permit issued by DEQ and that has consumed at least 1 million tons of Montana-mined coal a year has closed or is scheduled to close within 1 year shall be designated.

On June 11<sup>th</sup>, 2019 Talen Energy published a press release – “Talen Montana, the operator of the Colstrip Steam Electric Station (“Colstrip”), announced that, effective December 31, [2019], the owners of Colstrip Units 1 and 2 (Talen Montana and Puget Sound Energy) will permanently retire the units, which have a total 614 megawatt capacity rating”. This closure of Units 1 and 2 meet the qualifications for designation under this subsection.

Recently, Montana Dakota Utility announced its intentions of closing the Lewis & Clark coal-fired power plant in Richland County. However, according to the DEQ that facility has never consumed at least 1 million tons of coal per year over the life of the plant. Therefore, the pending closure of this coal-burning facility does not meet the qualifications of this subsection.

Designation under subsection (1) of any local governmental unit extends to and includes the county in which it is located.

Designation of a county under subsection (1) extends to and includes as a designated unit any local governmental unit in the county that contains at least 10% of the county's total population.

Designation under subsection (1) refers to the criteria explained above in:

- Population Increase or Decrease
- New Coal Development
- Increased or Decreased Coal Production
- New Railroad Service
- Air Quality Permit for a New Coal-Burning Facility
- Proximity to a Qualifying Coal Mine or Coal-Burning Facility
- Cessation or Scheduled Cessation of Mining
- Closure or Scheduled Closure of a Coal-Burning Facility

---

**LENGTH OF DESIGNATION***MCA 90-6-207(7)*

All designations based on an increase in coal development or in the consumption of coal by a coal-using energy complex made under subsection (1)(a), (1)(b), or (1)(c) must be for 1 year. A designation may not continue after the Department of Commerce determines the mine, railroad, or facility that provided the basis for a designation is contributing sufficient tax revenue to the designated governmental unit to meet the increased costs of providing the services necessitated by the development of the mine, railroad, or facility.

---

**ANALYSIS METHODOLOGY**

Designation of local governmental units due to the impacts of coal development can occur by means of a few different scenarios described in the earlier "Designation of Local Governmental Units" section of this report. Below is an explanation of the methodological process and some of the data used to fulfill the statutory guidelines for designation.

---

**POPULATION CHANGE ANALYSIS**

If a governmental unit has experienced or expects to have – as a result of coal development – a net increase or decrease in population of at least 10% over a 3-year period, they may be designated as "impacted". MCA 90-6-207(1)(a) defines the time periods for which population change should be considered. Those 3-year time periods are:

- One consecutive 3-year period ending 2 calendar years prior to the current calendar year (2019-2021);
- One consecutive 3-year period ending 1 calendar years prior to the current calendar year (2020-2022);
- One consecutive 3-year period ending with the current calendar year (2021-2023);
- One consecutive 3-year period ending 1 calendar years after to the current calendar year (2022-2024); and
- One consecutive 3-year period ending 2 calendar years after to the current calendar year (2023-2025).

Available population estimates for Montana's local governmental units were used as the basis for this analysis. Estimates for all Montana counties and incorporated cities and towns from 2017 – 2021 were the most current data available. For elementary, high school, and unified school district data from 2017 – 2021 was the most

current available. Population estimates for Native American Reservations were not available on an annual basis; therefore, population change analysis could not be performed for Tribal areas.

For the purposes of this report, the “current calendar year” is defined to be calendar year 2023. For each governmental unit, the annual average change in prior year’s population was used to forecast future year populations in order to have a consistent time series of population data from which to perform analysis.

## **COAL PRODUCTION ANALYSIS**

---

The last three available calendar years (2020 – 2022) of coal production data for each Montana coal mine was analyzed to infer future coal development at each mine. If a coal mine had a one-year change of more than 1 million tons of coal production – either increase or decrease – Commerce extrapolated that observation and determined that mine met the qualifications in subsection 90-6-207(1)(b)(ii). Please refer to Appendix A for historic coal production data broken out by Montana mine.

## **GEOSPATIAL ANALYSIS**

---

All governmental units located within 100 miles – measured over the shortest all-weather public road – of a new coal mine, a new coal-burning facility, or a mine with an expected production increase or decrease of at least 1 million tons per year are designated as “impacted” (see “Proximity to a Qualifying Mine or Coal-Burning Facility” above).

Montana Code Annotated (15-70-101) defines all-weather roads as those open to public travel and considered all mileage (excluding the National Highway System (NHS) and Primary roadways) available for public use (except during periods of extreme weather or emergency conditions), passable by a two-wheel drive passenger car, and open to the general public without restrictive gates, prohibitive signs, or regulations other than restrictions based on the size and weight of the vehicle. Private ranch, farm, and residential driveways, primitive trails, and field approaches are not considered part of the mileage.

Using GIS software, geospatial analysis was performed utilizing the most current data available for the State’s road network (by road type), mine locations, and local governmental unit boundaries. State road network and local governmental unit boundary data was obtained from the Montana State Library. Mine locations were determined using aerial imagery to identify all weather access roads connecting mine buildings to the State’s road network. The closest point from the access road to the all-weather road network was used as a starting point for determining the 100-mile distance from the mine. Where multiple mine access roads were identified, the most direct route from the State road network to the mines’ buildings was used.

## **RESULTS**

---

The governmental units that met statutory priorities discussed in this report were designated based on an increase in mining production at two mines, a decrease in mining production at one mine, a cessation of coal production at another mine, and the closure of coal-burning facilities in Montana. The specifics of the triggering events and subsequent local governmental unit designations are detailed below.

### **DESIGNATION DUE TO INCREASED OR DECREASED COAL PRODUCTION**

*MCA 90-6-207(1)(b)(ii)*

Based on the last couple years of data (See Appendix A), the Rosebud Mine is expected to see coal production increase by more than 1 million tons per year. Coal production at Rosebud Mine has rebounded since 2020's low of 5 million tons and could rise to its previously stable level around 8 million tons. Subsequently, all governmental units located within 100 miles from these mines are designated as "coal impacted".

Because the designation of these governmental units is due to an *increase* in coal development, the designation is only guaranteed for 1 year. A designation may not continue after Commerce determines the mine, railroad, or facility that provided the basis for a designation is contributing sufficient tax revenue to the designated governmental unit to meet the increased costs of providing the services necessitated by the development of the mine, railroad, or facility. If the designated local governmental units can show they are not receiving "sufficient tax revenue... to meet the increased costs" then a designation continuance may be issued by Commerce for the remainder of the biennium.

However, all of Rosebud Mine's designated governmental units are also contained within other qualifying mines' qualification parameters. Therefore, Rosebud Mine's 1-year designation is overridden by the other qualifying mine's designation status.

Based on the last few years of data (See Appendix A), three mines could see coal production decrease by more than 1 million tons per year: Bull Mountain Mine (formerly Signal Peak Mine), Spring Creek Mine, and Absaloka Mine. From 2016 to 2022, all three of these mines have seen large variations (exceeding 1 million tons) in annual coal production. Subsequently, all governmental units located within 100 miles from these mines are designated as "coal impacted".

---

#### **DESIGNATION DUE TO CESSATION OF COAL PRODUCTION**

*MCA 90-6-207(1)(d)(i)*

East Decker Mine and Savage Mine are both set to close due to declining demand. Historically, these coal mines have produced 3 million tons and 300,000 tons a year respectively. Therefore, each governmental unit in which these mines are located is designated (for the biennium) as "coal impacted."

A complete list of the local governmental units that are designated subject to these terms can be found in Appendix B of this report.

---

## **CONCLUSIONS**

Designation of local governmental units under MCA 90-6-207 has changed very little compared to the 2023 biennial designations. Please refer to Appendix B of this report for a complete list of designated local governmental units for all or possibly a portion of the 2025 Biennium.

Commerce is available to further discuss details with any governmental unit that is or is not on the list in Appendix B to provide information about the analysis and how governmental units met the statutory qualifications detailed in this report.

---

## **STATE AGENCIES CONTACTED & SOURCES USED**

Multiple State agencies and bureaus were contacted for information that may be material to the designation of coal impacted local governmental units. Data used in the analysis completed for this report was sourced from various entities. All contacted agencies and data sources used for the creation of this report are listed below.

---

## **STATE AGENCIES & ENTITIES CONTACTED FOR INFORMATION**



Montana Department of Environmental Quality  
Montana Department of Revenue  
Montana Department of Transportation  
Montana Local Government Services Bureau  
Montana Department of Commerce, Census and Economic Information Bureau  
Montana Department of Labor & Industry

#### **DATA SOURCES USED IN THE ANALYSIS FOR THIS REPORT**

---

Montana Department of Labor & Industry (DLI), Employment Relations Division, Safety and Health Bureau, Mining Section. Montana mine coal production data (through calendar year 2022).

Montana Legislative Services Division. Report to the Environmental Quality Council, *SJ 5: Coal in Montana Changing Times Challenging Times*. September 2018.

Montana State Library. State road network spatial files; local governmental unit spatial files.

Talen Energy. Public News Release June 11, 2019. *Colstrip Steam Electric Station Units 1 and 2 to Retire*.

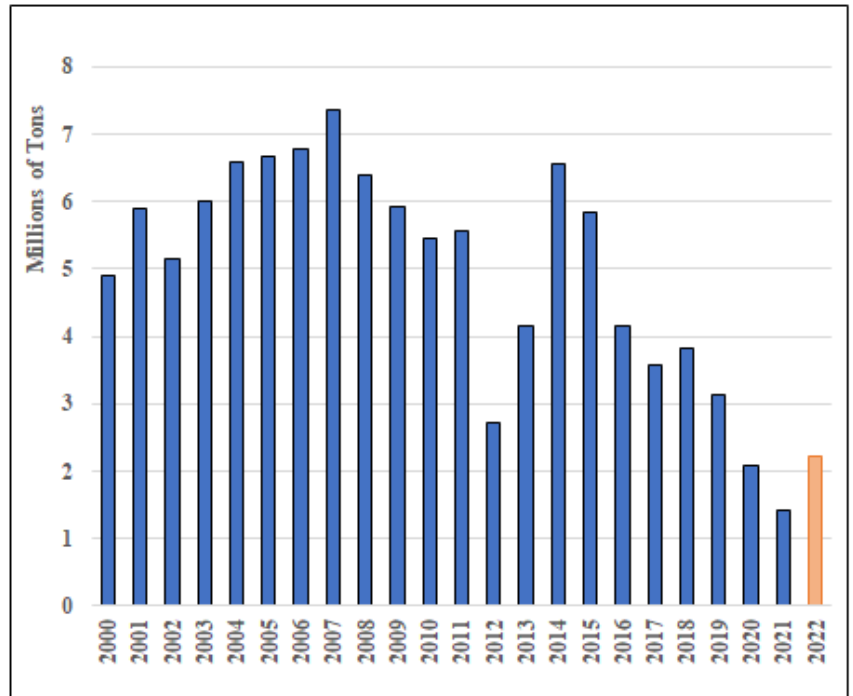
US Census Bureau, Population Estimates Division. Midyear population estimates for states, counties, and incorporated cities and towns (2021 vintage). Released May 2022

US Census Bureau, Small Area Income & Poverty Estimates. Population estimates for school districts (2021 vintage).

# APPENDIX A. HISTORIC COAL PRODUCTION BY MINE

## Absaloka Mine - Big Horn County Annual Coal Production (tons)

| Year | Annual Production | Annual Change | Annual Change (%) |
|------|-------------------|---------------|-------------------|
| 2000 | 4,910,907         | --            | --                |
| 2001 | 5,904,724         | 993,817       | 20.2%             |
| 2002 | 5,160,921         | (743,803)     | -12.6%            |
| 2003 | 6,016,678         | 855,757       | 16.6%             |
| 2004 | 6,588,633         | 571,955       | 9.5%              |
| 2005 | 6,663,499         | 74,866        | 1.1%              |
| 2006 | 6,782,935         | 119,436       | --                |
| 2007 | 7,347,794         | 564,859       | --                |
| 2008 | 6,391,000         | (956,794)     | --                |
| 2009 | 5,911,688         | (479,312)     | -7.5%             |
| 2010 | 5,467,954         | (443,734)     | -7.5%             |
| 2011 | 5,557,604         | 89,650        | 1.6%              |
| 2012 | 2,714,063         | (2,843,541)   | -51.2%            |
| 2013 | 4,168,749         | 1,454,686     | 53.6%             |
| 2014 | 6,557,844         | 2,389,095     | 57.3%             |
| 2015 | 5,844,619         | (713,225)     | -10.9%            |
| 2016 | 4,157,548         | (1,687,071)   | -28.9%            |
| 2017 | 3,573,756         | (583,792)     | -14.0%            |
| 2018 | 3,827,634         | 253,878       | 7.1%              |
| 2019 | 3,129,243         | (698,391)     | -18.2%            |
| 2020 | 2,082,589         | (1,046,654)   | -33.4%            |
| 2021 | 1,434,771         | (647,818)     | -31.1%            |
| 2022 | 2,229,592         | 794,821       | 55.4%             |

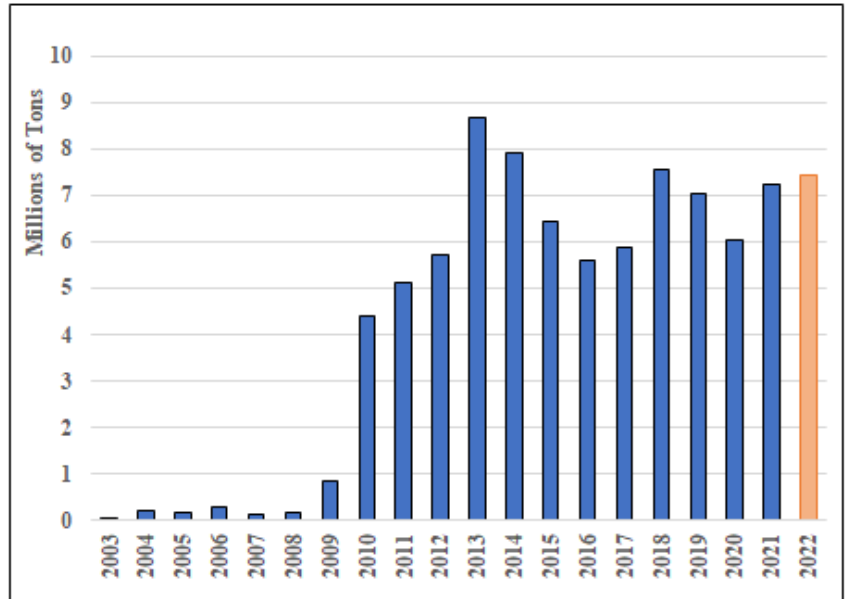


Source: Montana Department of Labor & Industry. Analysis by Montana Department of Commerce, Research & Information Services Bureau

## Bull Mountain Mine (formerly Signal Peak Mine) - Musselshell County

Annual Coal Production (tons)

| Year | Annual Production | Annual Change | Annual Change (%) |
|------|-------------------|---------------|-------------------|
| 2003 | 13,446            | --            | --                |
| 2004 | 208,755           | 195,309       | 1452.5%           |
| 2005 | 168,063           | (40,692)      | -19.5%            |
| 2006 | 286,712           | 118,649       | --                |
| 2007 | 137,300           | (149,412)     | --                |
| 2008 | 186,750           | 49,450        | --                |
| 2009 | 866,772           | 680,022       | 364.1%            |
| 2010 | 4,388,851         | 3,522,079     | 406.3%            |
| 2011 | 5,135,571         | 746,720       | 17.0%             |
| 2012 | 5,707,623         | 572,052       | 11.1%             |
| 2013 | 8,682,884         | 2,975,261     | 52.1%             |
| 2014 | 7,915,478         | (767,406)     | -8.8%             |
| 2015 | 6,419,640         | (1,495,838)   | -18.9%            |
| 2016 | 5,609,036         | (810,604)     | -12.6%            |
| 2017 | 5,883,956         | 274,920       | 4.9%              |
| 2018 | 7,566,483         | 1,682,527     | 28.6%             |
| 2019 | 7,019,128         | (547,355)     | -7.2%             |
| 2020 | 6,022,919         | (996,209)     | -14.2%            |
| 2021 | 7,246,556         | 1,223,637     | 20.3%             |
| 2022 | 7,431,271         | 184,715       | 2.5%              |

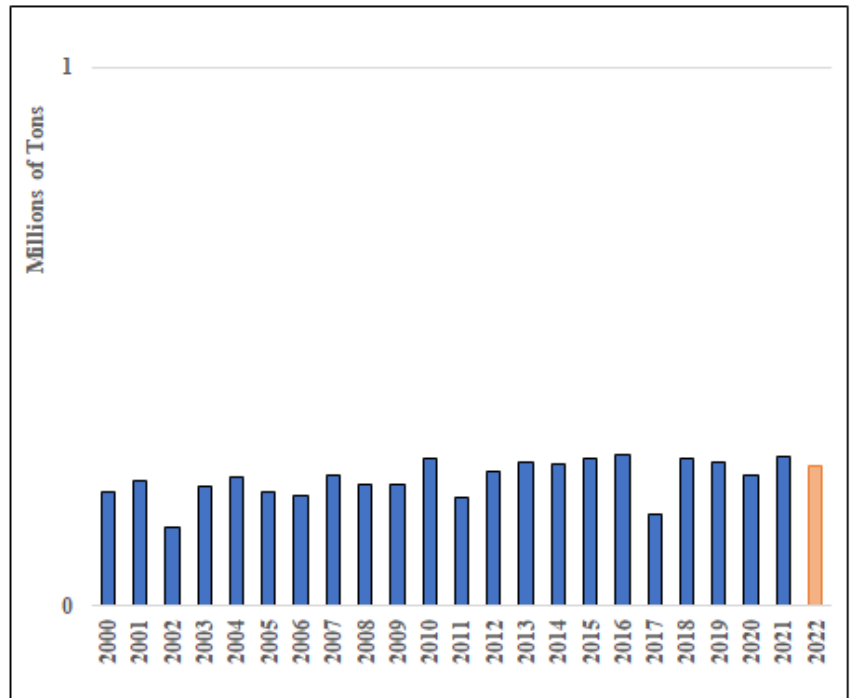


Source: Montana Department of Labor & Industry. Analysis by Montana Department of Commerce, Research & Information Services Bureau

## Celp Plant - Rosebud County

Annual Coal Production (*tons*)

| Year | Annual Production | Annual Change | Annual Change (%) |
|------|-------------------|---------------|-------------------|
| 2000 | 213,576           | --            | --                |
| 2001 | 231,829           | 18,253        | 8.5%              |
| 2002 | 148,439           | (83,390)      | -36.0%            |
| 2003 | 223,028           | 74,589        | 50.2%             |
| 2004 | 241,283           | 18,255        | 8.2%              |
| 2005 | 211,524           | (29,759)      | -12.3%            |
| 2006 | 203,914           | (7,610)       | --                |
| 2007 | 244,884           | 40,970        | --                |
| 2008 | 226,070           | (18,814)      | --                |
| 2009 | 226,646           | 576           | 0.3%              |
| 2010 | 273,006           | 46,360        | 20.5%             |
| 2011 | 203,121           | (69,885)      | -25.6%            |
| 2012 | 248,691           | 45,570        | 22.4%             |
| 2013 | 267,282           | 18,591        | 7.5%              |
| 2014 | 264,055           | (3,227)       | -1.2%             |
| 2015 | 275,790           | 11,735        | 4.4%              |
| 2016 | 280,213           | 4,423         | 1.6%              |
| 2017 | 169,278           | (110,935)     | -39.6%            |
| 2018 | 273,477           | 104,199       | 61.6%             |
| 2019 | 269,236           | (4,241)       | -1.6%             |
| 2020 | 242,212           | (27,024)      | -10.0%            |
| 2021 | 278,537           | 36,325        | 15.0%             |
| 2022 | 262,111           | (16,426)      | -5.9%             |

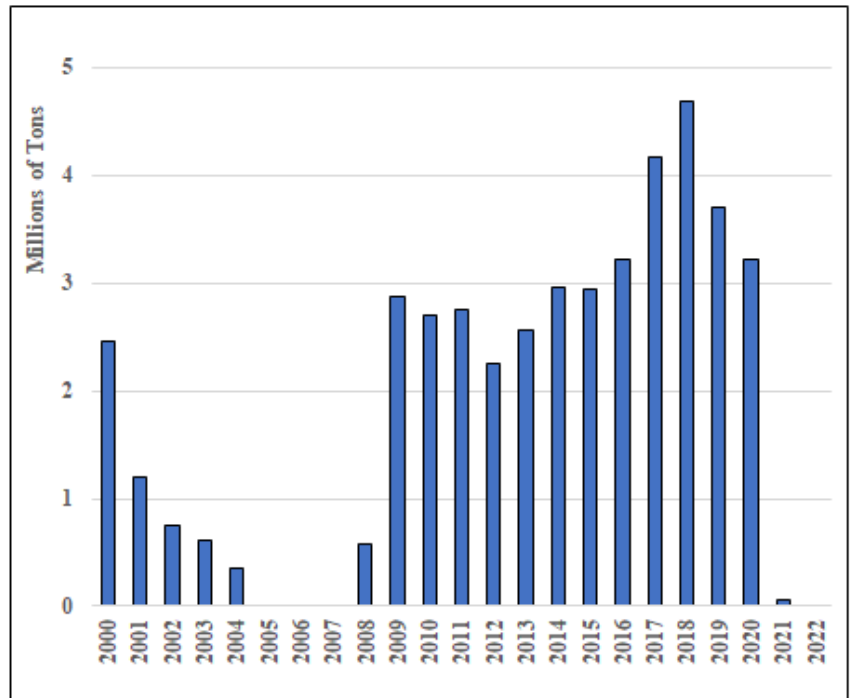


Source: Montana Department of Labor & Industry. Analysis by Montana Department of Commerce, Research & Information Services Bureau

## East Decker Mine - Big Horn County

Annual Coal Production (*tons*)

| Year | Annual Production | Annual Change | Annual Change (%) |
|------|-------------------|---------------|-------------------|
| 2000 | 2,465,352         | --            | --                |
| 2001 | 1,207,580         | (1,257,772)   | -51.0%            |
| 2002 | 746,967           | (460,613)     | -38.1%            |
| 2003 | 611,984           | (134,983)     | -18.1%            |
| 2004 | 355,142           | (256,842)     | -42.0%            |
| 2005 | 0                 | (355,142)     | -100.0%           |
| 2006 | 0                 | 0             | --                |
| 2007 | 0                 | 0             | --                |
| 2008 | 581,306           | 581,306       | --                |
| 2009 | 2,866,162         | 2,284,856     | 393.1%            |
| 2010 | 2,699,951         | (166,211)     | -5.8%             |
| 2011 | 2,749,367         | 49,416        | 1.8%              |
| 2012 | 2,247,873         | (501,494)     | -18.2%            |
| 2013 | 2,562,326         | 314,453       | 14.0%             |
| 2014 | 2,964,445         | 402,119       | 15.7%             |
| 2015 | 2,942,574         | (21,871)      | -0.7%             |
| 2016 | 3,225,895         | 283,321       | 9.6%              |
| 2017 | 4,175,084         | 949,189       | 29.4%             |
| 2018 | 4,688,914         | 513,830       | 12.3%             |
| 2019 | 3,701,222         | (987,692)     | -21.1%            |
| 2020 | 3,211,942         | (489,280)     | -13.2%            |
| 2021 | 61,688            | (3,150,254)   | -98.1%            |
| 2022 | 0                 | (61,688)      | -100.0%           |

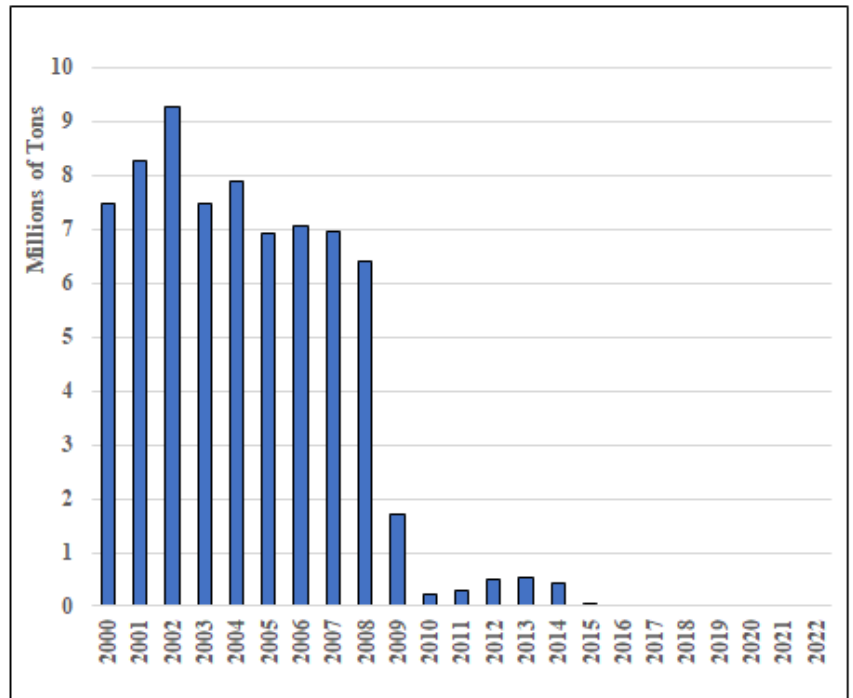


Source: Montana Department of Labor & Industry. Analysis by Montana Department of Commerce, Research & Information Services Bureau

## West Decker Mine - Big Horn County

Annual Coal Production (tons)

| Year | Annual Production | Annual Change | Annual Change (%) |
|------|-------------------|---------------|-------------------|
| 2000 | 7,466,814         | --            | --                |
| 2001 | 8,254,718         | 787,904       | 10.6%             |
| 2002 | 9,281,431         | 1,026,713     | 12.4%             |
| 2003 | 7,480,364         | (1,801,067)   | -19.4%            |
| 2004 | 7,886,137         | 405,773       | 5.4%              |
| 2005 | 6,915,690         | (970,447)     | -12.3%            |
| 2006 | 7,044,226         | 128,536       | --                |
| 2007 | 6,972,909         | (71,317)      | --                |
| 2008 | 6,411,896         | (561,013)     | --                |
| 2009 | 1,720,374         | (4,691,522)   | -73.2%            |
| 2010 | 228,006           | (1,492,368)   | -86.7%            |
| 2011 | 295,575           | 67,569        | 29.6%             |
| 2012 | 484,570           | 188,995       | 63.9%             |
| 2013 | 545,037           | 60,467        | 12.5%             |
| 2014 | 419,092           | (125,945)     | -23.1%            |
| 2015 | 21,496            | (397,596)     | -94.9%            |
| 2016 | 0                 | (21,496)      | -100.0%           |
| 2017 | 0                 | 0             | --                |
| 2018 | 0                 | 0             | --                |
| 2019 | 0                 | 0             | --                |
| 2020 | 0                 | 0             | --                |
| 2021 | --                | --            | --                |
| 2022 | --                | --            | --                |

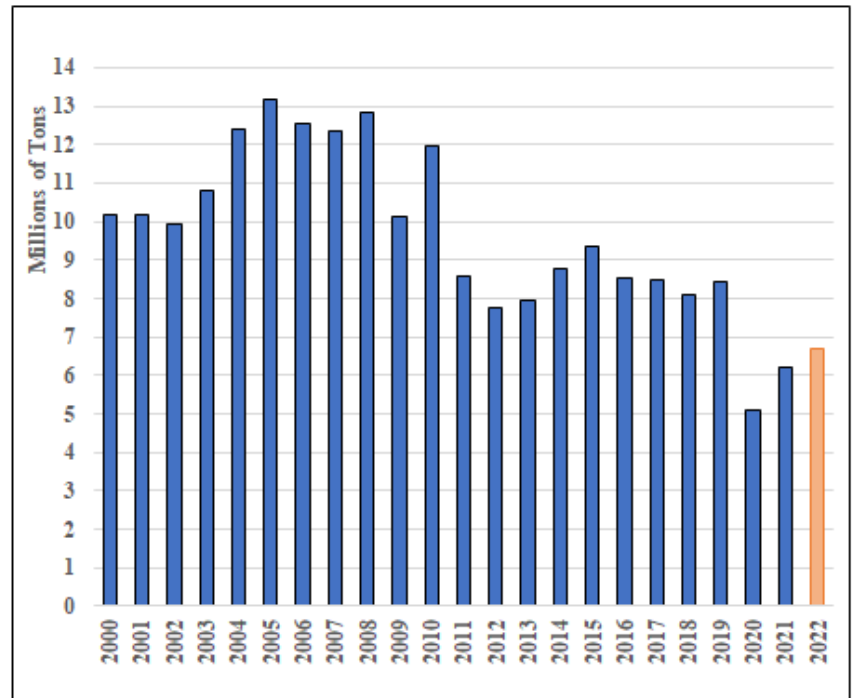


Source: Montana Department of Labor & Industry. Analysis by Montana Department of Commerce, Research & Information Services Bureau

## Rosebud Mine - Rosebud County

Annual Coal Production (tons)

| Year | Annual Production | Annual Change | Annual Change (%) |
|------|-------------------|---------------|-------------------|
| 2000 | 10,173,297        | --            | --                |
| 2001 | 10,151,692        | (21,605)      | -0.2%             |
| 2002 | 9,913,417         | (238,275)     | -2.3%             |
| 2003 | 10,779,695        | 866,278       | 8.7%              |
| 2004 | 12,413,482        | 1,633,787     | 15.2%             |
| 2005 | 13,164,977        | 751,495       | 6.1%              |
| 2006 | 12,527,789        | (637,188)     | --                |
| 2007 | 12,337,901        | (189,888)     | --                |
| 2008 | 12,826,742        | 488,841       | --                |
| 2009 | 10,105,036        | (2,721,706)   | -21.2%            |
| 2010 | 11,957,340        | 1,852,304     | 18.3%             |
| 2011 | 8,581,708         | (3,375,632)   | -28.2%            |
| 2012 | 7,761,804         | (819,904)     | -9.6%             |
| 2013 | 7,966,848         | 205,044       | 2.6%              |
| 2014 | 8,754,406         | 787,558       | 9.9%              |
| 2015 | 9,350,194         | 595,788       | 6.8%              |
| 2016 | 8,532,276         | (817,918)     | -8.7%             |
| 2017 | 8,461,252         | (71,024)      | -0.8%             |
| 2018 | 8,119,283         | (341,969)     | -4.0%             |
| 2019 | 8,428,924         | 309,641       | 3.8%              |
| 2020 | 5,103,444         | (3,325,480)   | -39.5%            |
| 2021 | 6,218,742         | 1,115,298     | 21.9%             |
| 2022 | 6,707,910         | 489,168       | 7.9%              |

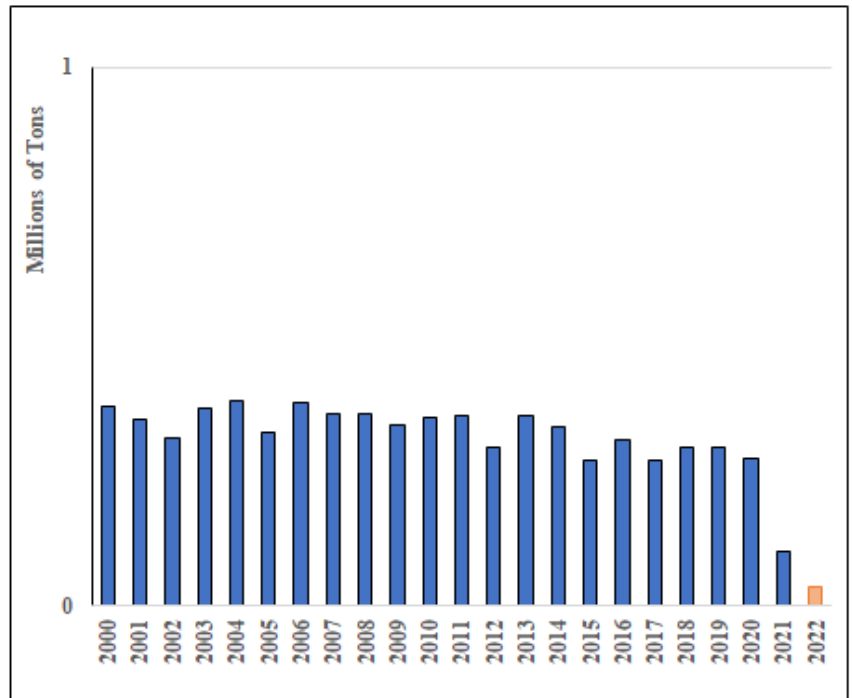


Source: Montana Department of Labor & Industry. Analysis by Montana Department of Commerce, Research & Information Services Bureau

## Savage Mine - Richland County

Annual Coal Production (tons)

| Year | Annual Production | Annual Change | Annual Change (%) |
|------|-------------------|---------------|-------------------|
| 2000 | 371,971           | --            | --                |
| 2001 | 346,355           | (25,616)      | -6.9%             |
| 2002 | 312,037           | (34,318)      | -9.9%             |
| 2003 | 368,867           | 56,830        | 18.2%             |
| 2004 | 380,042           | 11,175        | 3.0%              |
| 2005 | 323,536           | (56,506)      | -14.9%            |
| 2006 | 378,601           | 55,065        | --                |
| 2007 | 358,395           | (20,206)      | --                |
| 2008 | 356,344           | (2,051)       | --                |
| 2009 | 337,061           | (19,283)      | -5.4%             |
| 2010 | 351,502           | 14,441        | 4.3%              |
| 2011 | 354,669           | 3,167         | 0.9%              |
| 2012 | 296,454           | (58,215)      | -16.4%            |
| 2013 | 354,184           | 57,730        | 19.5%             |
| 2014 | 333,922           | (20,262)      | -5.7%             |
| 2015 | 270,286           | (63,636)      | -19.1%            |
| 2016 | 309,144           | 38,858        | 14.4%             |
| 2017 | 272,663           | (36,481)      | -11.8%            |
| 2018 | 294,840           | 22,177        | 8.1%              |
| 2019 | 293,750           | (1,090)       | -0.4%             |
| 2020 | 274,389           | (19,361)      | -6.6%             |
| 2021 | 100,410           | (173,979)     | -63.4%            |
| 2022 | 36,282            | (64,128)      | -63.9%            |



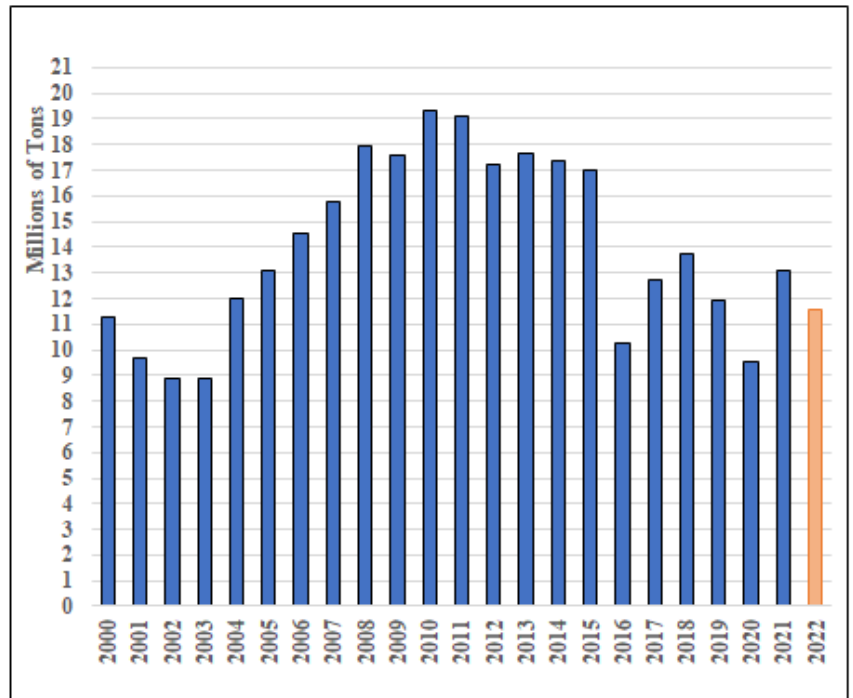
Source: Montana Department of Labor & Industry. Analysis by Montana Department of Commerce, Research & Information Services Bureau



## Spring Creek Mine - Big Horn County

Annual Coal Production (tons)

| Year | Annual Production | Annual Change | Annual Change (%) |
|------|-------------------|---------------|-------------------|
| 2000 | 11,301,905        | --            | --                |
| 2001 | 9,664,969         | (1,636,936)   | -14.5%            |
| 2002 | 8,905,368         | (759,601)     | -7.9%             |
| 2003 | 8,894,014         | (11,354)      | -0.1%             |
| 2004 | 12,001,290        | 3,107,276     | 34.9%             |
| 2005 | 13,113,486        | 1,112,196     | 9.3%              |
| 2006 | 14,561,848        | 1,448,362     | --                |
| 2007 | 15,773,724        | 1,211,876     | --                |
| 2008 | 17,947,506        | 2,173,782     | --                |
| 2009 | 17,608,969        | (338,537)     | -1.9%             |
| 2010 | 19,345,161        | 1,736,192     | 9.9%              |
| 2011 | 19,080,553        | (264,608)     | -1.4%             |
| 2012 | 17,200,109        | (1,880,444)   | -9.9%             |
| 2013 | 17,669,717        | 469,608       | 2.7%              |
| 2014 | 17,338,421        | (331,296)     | -1.9%             |
| 2015 | 16,987,414        | (351,007)     | -2.0%             |
| 2016 | 10,245,198        | (6,742,216)   | -39.7%            |
| 2017 | 12,725,355        | 2,480,157     | 24.2%             |
| 2018 | 13,759,894        | 1,034,539     | 8.1%              |
| 2019 | 11,928,833        | (1,831,061)   | -13.3%            |
| 2020 | 9,513,254         | (2,415,579)   | -20.2%            |
| 2021 | 13,095,743        | 3,582,489     | 37.7%             |
| 2022 | 11,552,939        | (1,542,804)   | -11.8%            |



Source: Montana Department of Labor & Industry. Analysis by Montana Department of Commerce, Research & Information Services Bureau

## APPENDIX B. LIST OF DESIGNATED LOCAL GOVERNMENTAL UNITS

### APPENDIX B.

| Local Governmental Unit Type | Local Governmental Unit Name         | Qualifying MCA                     |
|------------------------------|--------------------------------------|------------------------------------|
| <b>County</b>                |                                      |                                    |
| County                       | Big Horn County                      | MCA 90-6-207 (1)(d)(i)             |
| County                       | Carbon County                        | MCA 90-6-207 (1)(c) per (1)(b)(ii) |
| County                       | Carter County                        | MCA 90-6-207 (2)(a)                |
| County                       | Custer County                        | MCA 90-6-207 (1)(c) per (1)(b)(ii) |
| County                       | Fergus County                        | MCA 90-6-207 (1)(c) per (1)(b)(ii) |
| County                       | Garfield County                      | MCA 90-6-207 (1)(c) per (1)(b)(ii) |
| County                       | Golden Valley County                 | MCA 90-6-207 (1)(c) per (1)(b)(ii) |
| County                       | Judith Basin County                  | MCA 90-6-207 (1)(c) per (1)(b)(ii) |
| County                       | Musselshell County                   | MCA 90-6-207 (1)(b)(ii)            |
| County                       | Petroleum County                     | MCA 90-6-207 (1)(c) per (1)(b)(ii) |
| County                       | Powder River County                  | MCA 90-6-207 (1)(c) per (1)(b)(ii) |
| County                       | Richland County                      | MCA 90-6-207 (1)(d)(i)             |
| County                       | Rosebud County                       | MCA 90-6-207 (1)(b)(ii)            |
| County                       | Stillwater County                    | MCA 90-6-207 (1)(c) per (1)(b)(ii) |
| County                       | Sweet Grass County                   | MCA 90-6-207 (1)(c) per (1)(b)(ii) |
| County                       | Treasure County                      | MCA 90-6-207 (1)(c) per (1)(b)(ii) |
| County                       | Wheatland County                     | MCA 90-6-207 (1)(c) per (1)(b)(ii) |
| County                       | Yellowstone County                   | MCA 90-6-207 (1)(c) per (1)(b)(ii) |
| <b>Tribal Nation</b>         |                                      |                                    |
| Tribal Nation                | Crow Reservation                     | MCA 90-6-207 (1)(c) per (1)(b)(ii) |
| Tribal Nation                | Northern Cheyenne Indian Reservation | MCA 90-6-207 (1)(c) per (1)(b)(ii) |
| <b>Incorporated Place</b>    |                                      |                                    |
| Incorporated Town            | Bearcreek town                       | MCA 90-6-207 (1)(c) per (1)(b)(ii) |
| Incorporated City            | Big Timber city                      | MCA 90-6-207 (1)(c) per (1)(b)(ii) |
| Incorporated City            | Billings city                        | MCA 90-6-207 (1)(c) per (1)(b)(ii) |
| Incorporated Town            | Bridger town                         | MCA 90-6-207 (1)(c) per (1)(b)(ii) |
| Incorporated Town            | Broadus town                         | MCA 90-6-207 (1)(c) per (1)(b)(ii) |
| Incorporated Town            | Broadview town                       | MCA 90-6-207 (1)(c) per (1)(b)(ii) |
| Incorporated City            | Colstrip city                        | MCA 90-6-207 (1)(b)(ii)            |
| Incorporated Town            | Columbus town                        | MCA 90-6-207 (1)(c) per (1)(b)(ii) |
| Incorporated City            | Forsyth city                         | MCA 90-6-207 (1)(b)(ii)            |
| Incorporated Town            | Fromberg town                        | MCA 90-6-207 (1)(c) per (1)(b)(ii) |
| Incorporated Town            | Grass Range town                     | MCA 90-6-207 (1)(c) per (1)(b)(ii) |
| Incorporated City            | Hardin city                          | MCA 90-6-207 (2)(b)                |
| Incorporated City            | Harlowton city                       | MCA 90-6-207 (1)(c) per (1)(b)(ii) |
| Incorporated Town            | Hysham town                          | MCA 90-6-207 (1)(c) per (1)(b)(ii) |
| Incorporated Town            | Joliet town                          | MCA 90-6-207 (1)(c) per (1)(b)(ii) |
| Incorporated Town            | Jordan town                          | MCA 90-6-207 (2)(b)                |
| Incorporated City            | Judith Gap city                      | MCA 90-6-207 (1)(c) per (1)(b)(ii) |
| Incorporated City            | Laurel city                          | MCA 90-6-207 (1)(c) per (1)(b)(ii) |

|                                   |   |                                    |
|-----------------------------------|---|------------------------------------|
| Incorporated Town                 | Lavina town                             | MCA 90-6-207 (1)(c) per (1)(b)(ii) |
| Incorporated City                 | Lewistown city                          | MCA 90-6-207 (1)(c) per (1)(b)(ii) |
| Incorporated Town                 | Lodge Grass town                        | MCA 90-6-207 (1)(b)(ii)            |
| Incorporated Town                 | Melstone town                           | MCA 90-6-207 (1)(b)(ii)            |
| Incorporated City                 | Miles City city                         | MCA 90-6-207 (1)(c) per (1)(b)(ii) |
| Incorporated City                 | Red Lodge city                          | MCA 90-6-207 (1)(c) per (1)(b)(ii) |
| Incorporated City                 | Roundup city                            | MCA 90-6-207 (1)(b)(ii)            |
| Incorporated Town                 | Ryegate town                            | MCA 90-6-207 (1)(c) per (1)(b)(ii) |
| Incorporated City                 | Sidney city                             | MCA 90-6-207 (2)(b)                |
| Incorporated Town                 | Stanford town                           | MCA 90-6-207 (2)(b)                |
| Incorporated Town                 | Winnett town                            | MCA 90-6-207 (1)(c) per (1)(b)(ii) |
| <b>Elementary School District</b> |   |                                    |
| Elementary School District        | Absarokee Elementary School District    | MCA 90-6-207 (1)(c) per (1)(b)(ii) |
| Elementary School District        | Ashland Elementary School District      | MCA 90-6-207 (1)(b)(ii)            |
| Elementary School District        | Ayers Elementary School District        | MCA 90-6-207 (1)(c) per (1)(b)(ii) |
| Elementary School District        | Biddle Elementary School District       | MCA 90-6-207 (1)(c) per (1)(b)(ii) |
| Elementary School District        | Big Timber Elementary School District   | MCA 90-6-207 (1)(c) per (1)(b)(ii) |
| Elementary School District        | Billings Elementary School District     | MCA 90-6-207 (1)(c) per (1)(b)(ii) |
| Elementary School District        | Birney Elementary School District       | MCA 90-6-207 (1)(b)(ii)            |
| Elementary School District        | Blue Creek Elementary School District   | MCA 90-6-207 (1)(c) per (1)(b)(ii) |
| Elementary School District        | Broadus Elementary School District      | MCA 90-6-207 (1)(c) per (1)(b)(ii) |
| Elementary School District        | Broadview Elementary School District    | MCA 90-6-207 (1)(b)(ii)            |
| Elementary School District        | Canyon Creek Elementary School District | MCA 90-6-207 (1)(c) per (1)(b)(ii) |
| Elementary School District        | Cohagen Elementary School District      | MCA 90-6-207 (1)(c) per (1)(b)(ii) |
| Elementary School District        | Colstrip Elementary School District     | MCA 90-6-207 (1)(b)(ii)            |
| Elementary School District        | Columbus Elementary School District     | MCA 90-6-207 (1)(c) per (1)(b)(ii) |
| Elementary School District        | Culbertson Elementary School District   | MCA 90-6-207 (2)(b)                |
| Elementary School District        | Elder Grove Elementary School District  | MCA 90-6-207 (1)(c) per (1)(b)(ii) |
| Elementary School District        | Elysian Elementary School District      | MCA 90-6-207 (1)(c) per (1)(b)(ii) |
| Elementary School District        | Fairview Elementary School District     | MCA 90-6-207 (2)(b)                |
| Elementary School District        | Fishtail Elementary School District     | MCA 90-6-207 (1)(c) per (1)(b)(ii) |
| Elementary School District        | Forsyth Elementary School District      | MCA 90-6-207 (1)(b)(ii)            |
| Elementary School District        | Grass Range Elementary School District  | MCA 90-6-207 (1)(c) per (1)(b)(ii) |
| Elementary School District        | Greycliff Elementary School District    | MCA 90-6-207 (1)(c) per (1)(b)(ii) |
| Elementary School District        | Hardin Elementary School District       | MCA 90-6-207 (2)(b)                |
| Elementary School District        | Independent Elementary School District  | MCA 90-6-207 (1)(c) per (1)(b)(ii) |
| Elementary School District        | Joliet Elementary School District       | MCA 90-6-207 (1)(c) per (1)(b)(ii) |
| Elementary School District        | Jordan Elementary School District       | MCA 90-6-207 (1)(c) per (1)(b)(ii) |
| Elementary School District        | Judith Gap Elementary School District   | MCA 90-6-207 (1)(c) per (1)(b)(ii) |
| Elementary School District        | King Colony Elementary School District  | MCA 90-6-207 (1)(c) per (1)(b)(ii) |
| Elementary School District        | Kinsey Elementary School District       | MCA 90-6-207 (1)(c) per (1)(b)(ii) |
| Elementary School District        | Kircher Elementary School District      | MCA 90-6-207 (1)(c) per (1)(b)(ii) |
| Elementary School District        | Lame Deer Elementary School District    | MCA 90-6-207 (1)(b)(ii)            |
| Elementary School District        | Laurel Elementary School District       | MCA 90-6-207 (1)(c) per (1)(b)(ii) |
| Elementary School District        | Lewistown Elementary School District    | MCA 90-6-207 (1)(c) per (1)(b)(ii) |
| Elementary School District        | Lodge Grass Elementary School District  | MCA 90-6-207 (2)(b)                |
| Elementary School District        | Luther Elementary School District       | MCA 90-6-207 (1)(c) per (1)(b)(ii) |

|                                  |  |                                    |
|----------------------------------|--|------------------------------------|
| Elementary School District       | Melstone Elementary School District            | MCA 90-6-207 (1)(b)(ii)            |
| Elementary School District       | Melville Elementary School District            | MCA 90-6-207 (1)(c) per (1)(b)(ii) |
| Elementary School District       | Miles City Elementary School District          | MCA 90-6-207 (1)(c) per (1)(b)(ii) |
| Elementary School District       | Molt Elementary School District                | MCA 90-6-207 (1)(c) per (1)(b)(ii) |
| Elementary School District       | Moore Elementary School District               | MCA 90-6-207 (1)(c) per (1)(b)(ii) |
| Elementary School District       | Morin Elementary School District               | MCA 90-6-207 (1)(c) per (1)(b)(ii) |
| Elementary School District       | Park City Elementary School District           | MCA 90-6-207 (1)(c) per (1)(b)(ii) |
| Elementary School District       | Pioneer Elementary School District             | MCA 90-6-207 (1)(c) per (1)(b)(ii) |
| Elementary School District       | Pryor Elementary School District               | MCA 90-6-207 (1)(b)(ii)            |
| Elementary School District       | Rapelje Elementary School District             | MCA 90-6-207 (1)(c) per (1)(b)(ii) |
| Elementary School District       | Red Lodge Elementary School District           | MCA 90-6-207 (1)(c) per (1)(b)(ii) |
| Elementary School District       | Reed Point Elementary School District          | MCA 90-6-207 (1)(c) per (1)(b)(ii) |
| Elementary School District       | Ross Elementary School District                | MCA 90-6-207 (1)(c) per (1)(b)(ii) |
| Elementary School District       | Roundup Elementary School District             | MCA 90-6-207 (1)(b)(ii)            |
| Elementary School District       | S H Elementary School District                 | MCA 90-6-207 (1)(c) per (1)(b)(ii) |
| Elementary School District       | S Y Elementary School District                 | MCA 90-6-207 (1)(c) per (1)(b)(ii) |
| Elementary School District       | Sand Springs Elementary School District        | MCA 90-6-207 (1)(c) per (1)(b)(ii) |
| Elementary School District       | Savage Elementary School District              | MCA 90-6-207 (1)(d)(i)             |
| Elementary School District       | Shepherd Elementary School District            | MCA 90-6-207 (1)(c) per (1)(b)(ii) |
| Elementary School District       | Sidney Elementary School District              | MCA 90-6-207 (2)(b)                |
| Elementary School District       | South Stacey Elementary School District        | MCA 90-6-207 (1)(c) per (1)(b)(ii) |
| Elementary School District       | Spring Creek Elementary School District        | MCA 90-6-207 (1)(d)(i)             |
| Elementary School District       | Trail Creek Elementary School District         | MCA 90-6-207 (1)(c) per (1)(b)(ii) |
| Elementary School District       | Wyola Elementary School District               | MCA 90-6-207 (1)(b)(ii)            |
| Elementary School District       | Yellowstone Academy Elementary School District | MCA 90-6-207 (1)(c) per (1)(b)(ii) |
| <b>Secondary School District</b> |  |                                    |
| Secondary School District        | Absarokee High School District                 | MCA 90-6-207 (1)(c) per (1)(b)(ii) |
| Secondary School District        | Billings High School District                  | MCA 90-6-207 (1)(c) per (1)(b)(ii) |
| Secondary School District        | Broadview High School District                 | MCA 90-6-207 (1)(b)(ii)            |
| Secondary School District        | Colstrip High School District                  | MCA 90-6-207 (1)(b)(ii)            |
| Secondary School District        | Columbus High School District                  | MCA 90-6-207 (1)(c) per (1)(b)(ii) |
| Secondary School District        | Custer County High School District             | MCA 90-6-207 (1)(c) per (1)(b)(ii) |
| Secondary School District        | Fairview High School District                  | MCA 90-6-207 (2)(b)                |
| Secondary School District        | Fergus High School District                    | MCA 90-6-207 (1)(c) per (1)(b)(ii) |
| Secondary School District        | Forsyth High School District                   | MCA 90-6-207 (1)(b)(ii)            |
| Secondary School District        | Garfield County High School District           | MCA 90-6-207 (1)(c) per (1)(b)(ii) |
| Secondary School District        | Grass Range High School District               | MCA 90-6-207 (1)(c) per (1)(b)(ii) |
| Secondary School District        | Hardin High School District                    | MCA 90-6-207 (1)(d)(i)             |
| Secondary School District        | Joliet High School District                    | MCA 90-6-207 (1)(c) per (1)(b)(ii) |
| Secondary School District        | Judith Gap High School District                | MCA 90-6-207 (1)(c) per (1)(b)(ii) |
| Secondary School District        | Lame Deer High School District                 | MCA 90-6-207 (2)(b)                |
| Secondary School District        | Laurel High School District                    | MCA 90-6-207 (1)(c) per (1)(b)(ii) |
| Secondary School District        | Lodge Grass High School District               | MCA 90-6-207 (2)(b)                |
| Secondary School District        | Melstone High School District                  | MCA 90-6-207 (1)(b)(ii)            |
| Secondary School District        | Moore High School District                     | MCA 90-6-207 (1)(c) per (1)(b)(ii) |
| Secondary School District        | Park City High School District                 | MCA 90-6-207 (1)(c) per (1)(b)(ii) |
| Secondary School District        | Plenty Coups High School District              | MCA 90-6-207 (1)(b)(ii)            |

|                                |  |                                    |
|--------------------------------|--|------------------------------------|
| Secondary School District      | Powder River County High School District | MCA 90-6-207 (1)(c) per (1)(b)(ii) |
| Secondary School District      | Rapelje High School District             | MCA 90-6-207 (1)(c) per (1)(b)(ii) |
| Secondary School District      | Red Lodge High School District           | MCA 90-6-207 (1)(c) per (1)(b)(ii) |
| Secondary School District      | Reed Point High School District          | MCA 90-6-207 (1)(c) per (1)(b)(ii) |
| Secondary School District      | Roundup High School District             | MCA 90-6-207 (1)(b)(ii)            |
| Secondary School District      | Savage High School District              | MCA 90-6-207 (1)(d)(i)             |
| Secondary School District      | Shepherd High School District            | MCA 90-6-207 (1)(c) per (1)(b)(ii) |
| Secondary School District      | Sidney High School District              | MCA 90-6-207 (2)(b)                |
| Secondary School District      | Sweet Grass County High School District  | MCA 90-6-207 (1)(c) per (1)(b)(ii) |
| <b>Unified School District</b> |  |                                    |
| Unified School District        | Belfry K-12 Schools                      | MCA 90-6-207 (1)(c) per (1)(b)(ii) |
| Unified School District        | Bridger K-12 Schools                     | MCA 90-6-207 (1)(c) per (1)(b)(ii) |
| Unified School District        | Custer K-12 Schools                      | MCA 90-6-207 (1)(c) per (1)(b)(ii) |
| Unified School District        | Fromberg K-12                            | MCA 90-6-207 (1)(c) per (1)(b)(ii) |
| Unified School District        | Geyser K-12 Schools                      | MCA 90-6-207 (2)(b)                |
| Unified School District        | Harlowton K-12 Schools                   | MCA 90-6-207 (1)(c) per (1)(b)(ii) |
| Unified School District        | Hobson K-12 Schools                      | MCA 90-6-207 (1)(c) per (1)(b)(ii) |
| Unified School District        | Huntley Project K-12 Schools             | MCA 90-6-207 (1)(c) per (1)(b)(ii) |
| Unified School District        | Hysham K-12 Schools                      | MCA 90-6-207 (1)(c) per (1)(b)(ii) |
| Unified School District        | Lavina K-12 Schools                      | MCA 90-6-207 (1)(c) per (1)(b)(ii) |
| Unified School District        | Lockwood K-12                            | MCA 90-6-207 (1)(c) per (1)(b)(ii) |
| Unified School District        | Roberts K-12 Schools                     | MCA 90-6-207 (1)(c) per (1)(b)(ii) |
| Unified School District        | Rosebud K-12                             | MCA 90-6-207 (1)(b)(ii)            |
| Unified School District        | Roy K-12 Schools                         | MCA 90-6-207 (1)(c) per (1)(b)(ii) |
| Unified School District        | Ryegate K-12 Schools                     | MCA 90-6-207 (1)(c) per (1)(b)(ii) |
| Unified School District        | Stanford K-12 Schools                    | MCA 90-6-207 (2)(b)                |
| Unified School District        | Winnett K-12 Schools                     | MCA 90-6-207 (1)(c) per (1)(b)(ii) |